



# 2018-2019 ***EMPLOYEE HANDBOOK***

110 East 4<sup>th</sup> Street  
PO BOX 89  
NELIGH, NE 68756  
OFFICE 402-887-5041  
FAX 402-887-4604

*Central Learning Center*  
402 P Street  
PO Box 89  
Neligh, NE 68756  
402-887-5559

*Central Learning Center South*  
212 Main Street  
PO Box 89  
Neligh, NE 68756  
402-887-5041 ext 1246

*Eastern Learning Center*  
300 West Eisenhower  
PO Box  
Norfolk, NE 68702  
402-371-3454

*Western Learning Center*  
520 East Clay Street  
P.O. Box 508  
O'Neill, NE 68763  
402-336-3707

# Administration and Departments of Educational Service Unit 8

<b>Administrator</b>	Bill Mowinkel
<b>Assistant Administrator / Nursing / Professional Development</b>	Jill Bates
<b>Business Manager</b>	Elleah Wiebelhaus
<b>Director of Special Education</b>	Ruth Miller
<b>Production and Media Services</b>	Molly Aschoff
<b>Psychology Coordinator</b>	Cathy Fiala
<b>Speech/Language Coordinator</b>	Jennifer Stahlecker
<b>Technology Coordinator</b>	Brent Pickrel
<b>Facility Manager</b>	Darrel Sorensen

# TABLE OF CONTENTS

## I. Introduction

## II. Organization Of Unit

- A. Board of Educational Service Unit 8
- B. Administration of the Unit
- C. Department Coordinators
- D. Governance of Unit

## III. Working Conditions

- A. Individual Responsibility
- B. Work Week
- C. Attendance and Punctuality

## IV. Compensation and Terms of Employment

- A. Certified/Nursing Staff Members
  - 1. Salary
    - a. Salary Schedule
    - b. Base Salary
    - c. Initial Placement
    - d. Movement on Schedule
    - e. Filing of Transcripts
    - g. Administrative Increment
    - h. Longevity Incentive
  - 2. Fringe Benefits
  - 3. Leaves
    - a. Sick Leave
    - b. Bereavement Leave
    - c. Personal Leave
    - d. Professional Leave
  - 4. Grievance Procedure
  - 5. Calendar
  - 6. Mileage and Approved Expenses
- B. Non-Certified Staff Members
  - 1. Salary
    - a. Salary Schedule
    - b. Base Salary
    - c. Initial Placement
    - d. Longevity Incentive
  - 2. Fringe Benefits
  - 3. Leaves
    - a. Sick Leave
    - b. Bereavement Leave
    - c. Personal Leave
    - d. Professional Leave

- 4. Calendar
  - 5. Mileage and Approved Expenses
  - 6. Paid Holidays
  - 7. Vacation
  - 8. Snow Days
  - C. Compensation
  - D. Mileage and Expense Claims
  - E. Substitute Teachers and Paraprofessionals (First-time Hired)
  - F. Inclement Weather
- IV. Title IX, Drug-Free and Smoking Policies
- A. Title IX and Section 504
  - B. Drug-Free Workplace Policy
  - C. Smoking Policy
- V. Equipment and Facilities
- A. Use of Equipment, Materials and Supplies
  - B. Use of Facilities
- VI. Miscellaneous
- A. Purchases
  - B. Committees, Offices and Professional Presentations
  - C. Confidential Information
  - D. Relationship With Local Schools
  - E. Contract Release

## **I. INTRODUCTION**

The purpose of this document is to give employees some guidelines and to communicate information regarding general working conditions at ESU 8. It is not intended to be binding and the Administrator of the Unit may modify, delete or clarify the information at any time. Complete organization guidelines can be found in the ESU 8 Board Policies.

## II. ORGANIZATION OF SERVICE UNIT 8

### ***A. Board of Educational Service Unit 8***

The Board of ESU 8 is the policy-making body. They will also see that all mandatory laws shall be carried out. The Board of Directors meet on the third Monday of each month.

### ***B. Administration of the Unit***

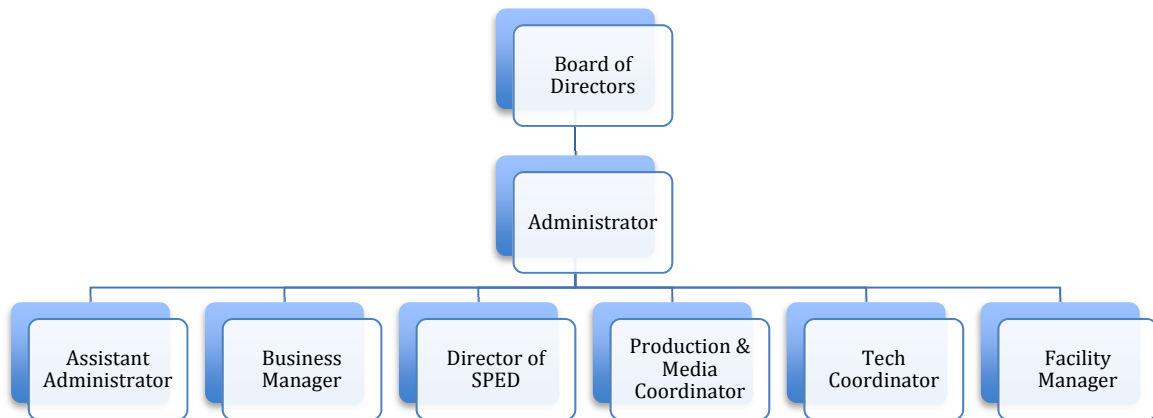
ESU 8 employs an Administrator who is responsible for the overall leadership of the Unit. The Administrator implements the budget according to the Board of Directors. The Administrator is responsible for the implementation of all Board policies.

### ***C. Department Coordinators***

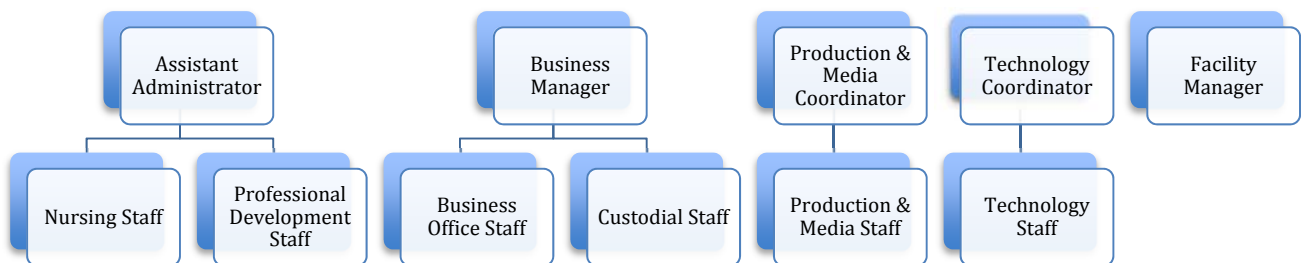
Each Department of ESU 8 has a designated coordinator who is responsible for the coordination of their respective department. The Department Coordinators are the first contact for Unit employees for decisions or problems that may arise. In reviewing the organization of ESU 8, employees who have a problem should follow the chain of command.

## D. Governance of Unit

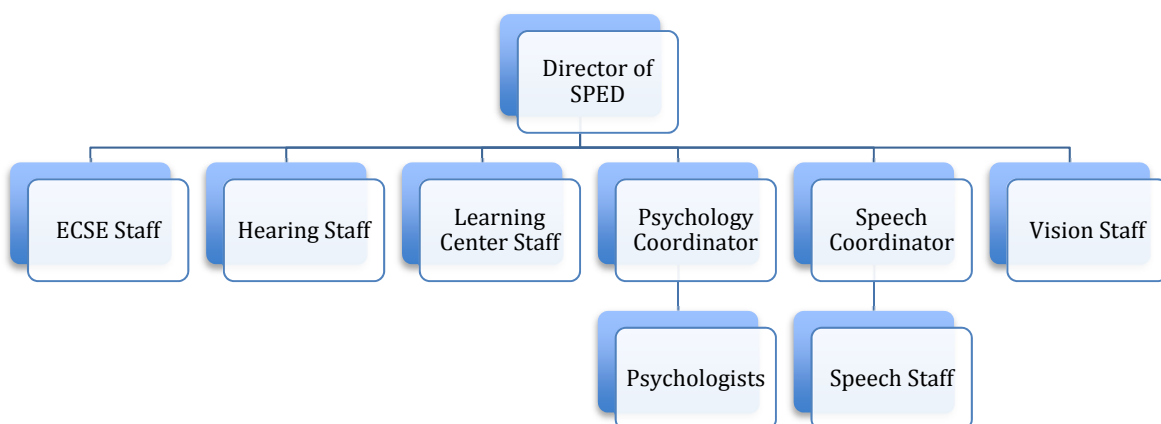
### Department Coordinators



### Department Staff



### SPED Staff



### III. WORKING CONDITIONS

#### ***A. Individual Responsibility***

Each individual employed by ESU 8 is responsible for following all approved policies. The Administration of ESU 8 is responsible for the organization and implementation of all policies.

#### ***B. Workweek***

The workweek for staff members is directly related to the full-time equivalency of their contracts. Initial work schedules will be planned with the Department Coordinator. As a general rule, salaried staff members must be in the Learning Centers or their assigned location at 8:00 A.M. and will remain on duty at the building until at least 4:00 P.M. Hourly employees will follow the daily schedule of their assigned location. Each employee is expected to report to work on time and every day that his or her place of employment is in operation. While the employee's place of residence is not a condition of employment, neither is it a justification for not reporting to work in a timely and regular manner.

#### ***C. Attendance and Punctuality***

Regular attendance and punctuality contribute greatly to the effective operation of all programs. ESU 8 stresses the importance of developing efficient work habits that serve as indicators of employee dependability and value. There are times when illness or other reasons make it necessary to be absent. Prompt reporting of an absence permits supervisors to plan accordingly, thus reducing problems related to absenteeism.

All employees must notify their assigned school and their supervisor immediately of any absences.

If an employee anticipates being late for work, he/she should notify the appropriate supervisor and/or school and indicate the expected time of arrival at his/her workstation. Repeated or chronic tardiness to work is considered unacceptable conduct and is grounds for discipline, suspension or dismissal.



## IV. COMPENSATION AND TERMS OF EMPLOYMENT

### A. *Certified/Nursing Staff Members*

#### 1. Salary

**a. Salary Schedule.** The salary schedule for certified employees shall consist of 4% vertical increments for years of experience and 5% horizontal increments for each nine hours of approved educational credit beyond the bachelor's degree. The salary schedule for registered nurses shall consist of 25¢ per hour vertical increments for years of experience.

**b. Base Salary.** The base salary for the 2018-2019 contract year shall be \$36,975. The base salary for registered nurses for the 2018-2019 contract year shall be \$21.05 per hour.

**c. Initial Placement.** The maximum years of prior experience allowed for newly hired employees for initial placement on the salary schedule shall be five years unless the ESU 8 Board approves additional years of experience. When hiring, the Board may deviate from the salary schedule if it is necessary because of a shortage in certain areas.

**d. Movement on Schedule.** An employee may move up to a maximum of two horizontal steps for education attainment on the salary schedule from September 1 to August 31 of the following year.

**e. Filing of Transcripts.** To move horizontally on the salary schedule, employees must furnish an official college transcript to the Business Manager before September 1<sup>st</sup> of the contract year. Salaries will be computed, and contracts issued on the basis of approved credit hours completed by March 15<sup>th</sup> of the prior contract year. The Board will adjust the salaries and employee contracts at the September Board meeting to reflect additional hours of credit completed after the contract was initially issued.

**f. Administrative Increment.** Those administrators and department coordinators who are paid on the salary schedule and have three or more employees under their direct supervision shall receive an additional payment of 5% of the current base salary.

**g. Longevity Incentive.** Those employees who have been employed with ESU 8 for 10 consecutive years and are frozen at the bottom of the salary schedule for two consecutive years will, on that second year, qualify for an incentive payment based on a percentage of the base salary. That incentive payment will be added to the employee's annual salary and paid to the employee as part of their monthly compensation.

## 2. Fringe Benefits

The Unit will provide full-time employees \$1,160 per month to be applied, at the employee's designation, to the payment of premiums for Educators' Health Alliance Blue-Cross/Blue-Shield Group Health Insurance Plan or as a cash option. ESU 8 employees are required to provide proof of group insurance coverage if they do not enroll in at least single health coverage through the Educator's Health Alliance Blue-Cross/Blue-Shield Group Health Insurance Plan. If such proof of coverage is not provided, the employee will be enrolled in single coverage at the lowest premium amount and the employee's fringe will be utilized to pay for such premium. The contribution for part-time employees will be prorated based on the percentage of their employment. New employees become eligible for fringe benefits on a pro-rated basis.

## 3. Leaves

- a. **Sick Leave.** Full-time employees will receive eleven days of sick leave per contract year with one day to be deducted for the Catastrophic Leave Bank. Each employee's unused sick leave will be credited toward a maximum accumulation of forty-five days. Part-time employees' sick leave will be prorated based on the percentage of their employment. New employees become eligible for paid leave on a pro-rated basis.
- b. **Bereavement Leave.** Full-time employees will receive six days of bereavement leave per contract year. Each employee's unused bereavement leave will be credited toward a maximum accumulation of ten days. Part-time employees' bereavement leave will be prorated based on the percentage of their employment. New employees become eligible for paid leave on a pro-rated basis.
- c. **Personal Leave.** Full-time employees will receive two days of personal leave. Employees must secure administrative approval in advance before taking personal leave and may not take it immediately before or after a holiday or vacation day. Employees will be able to carry forward accrued personal days and shall receive two additional days for the next contract year. In no event shall the employee receive additional days beyond the four-day accrual cap. Part-time employees' personal leave will be prorated based on the percentage of their employment. New employees become eligible for paid leave on a pro-rated basis.
- d. **Professional Leave.** Employees will receive paid professional leave. Employees must secure administrative approval in advance before taking professional leave.

e. **Flex Day.** All full-time Certified employees will be eligible to submit a flex day request to the ESU 8 Business Office. This will allow an employee to use one banked sick day per year as a personal day. The employees sick leave will be reduced by one day and that time will be added to their personal leave balance. All part-time employees will receive a prorated amount of flex day benefits.

#### **4. Grievance Procedure**

The grievance procedure shall be the one approved in ESU 8 Board policies.

#### **5. Calendar**

The calendar will be established by the ESU 8 Board of Directors.

#### **6. Mileage and Approved Expenses**

Approved mileage will be reimbursed at the rate set by the Board from an assigned central home base. All approved expenses will be reimbursed to employees.

### ***B. Non-Certified Staff Members***

#### **1. Salary**

- a. **Salary Schedule.** The salary schedule for non-certified employees shall consist of 3.5% increase per hour for vertical increments for years of experience and 2.5% increase per hour for horizontal increments for each 30 hours of approved educational credit beyond the GED.
- b. **Base Salary.** The base salary for the 2018-2019 contract year shall be \$9.51 per hour.
- c. **Initial Placement.** The maximum years of prior experience allowed for newly hired employees for initial placement on the salary schedule shall be five years unless the ESU 8 Administrator approves additional years of experience.
- d. **Longevity Incentive On-Schedule.** Those employees who have been employed with ESU 8 for ten consecutive years and are frozen at the bottom of the salary schedule for two consecutive years will, on that second year, qualify for an incentive payment based on a percentage of the base salary. That incentive payment will be added to the employee's annual salary and paid to the employee as part of their monthly compensation.
- e. **Longevity Incentive 12-Month.** Twelve-month non-certificated employees will receive one additional vacation day for each five years of consecutive service. In no event shall an employee receive

additional days beyond the fifteen-day accrual cap. Prior years of service will be allowed, but the employee will not be allowed to exceed two additional days of vacation each year until they are caught up.

## **2. Fringe Benefits**

The Unit will provide full-time employees \$1,160 per month to be applied, at the employee's designation, to the payment of premiums for Educators' Health Alliance Blue-Cross/Blue-Shield Group Health Insurance Plan or as a cash option. ESU 8 employees are required to provide proof of group insurance coverage if they do not enroll in at least single health coverage through the Educator's Health Alliance Blue-Cross/Blue-Shield Group Health Insurance Plan. If such proof of coverage is not provided, the employee will be enrolled in single coverage at the lowest premium amount and the employee's fringe will be utilized to pay for such premium. The contribution for part-time employees will be prorated based on the percentage of their employment. New employees become eligible for fringe benefits on a pro-rated basis.

## **3. Leaves.**

- a. Sick Leave.** Full-time employees will receive eleven days of sick leave per contract year with one day to be deducted for the Catastrophic Leave Bank. Each employee's unused sick leave will be credited toward a maximum accumulation of forty-five days. Part-time employees' sick leave will be prorated based on the percentage of their employment. New employees become eligible for paid leave on a pro-rated basis.
- b. Bereavement Leave.** Full-time employees will receive six days of bereavement leave per contract year. Each employee's unused bereavement leave will be credited toward a maximum accumulation of ten days. Part-time employees' bereavement leave will be prorated based on the percentage of their employment. New employees become eligible for paid leave on a pro-rated basis.
- c. Personal Leave.** Full-time employees will receive two days of personal leave. Employees must secure administrative approval in advance before taking personal leave and may not take it immediately before or after a holiday or vacation day. Employees will be able to carry forward accrued personal days and shall receive 2 additional days for the next contract year. In no event shall the employee receive additional days beyond the 4-day accrual cap. Part-time employees' personal leave will be prorated based on the percentage of their employment. New employees become eligible for paid leave on a pro-rated basis.



**E. Substitute Teachers and Paraprofessionals (First-time Hired)**

The Head Teacher of each school should ensure that the ESU 8 Business Office has all of the appropriate forms completed when a substitute is hired for the first time. This information is required before an individual can sub.

**F. Inclement Weather**

Teachers and paraprofessionals working in the Learning Centers will follow the closing policies as established by the Director of Special Education. Whenever possible, employees should report to their assigned location.

## **IV. TITLE IX, DRUG-FREE and SMOKING POLICIES**

### **A. *Title IX and Section 504***

Title IX of the Education Amendments of 1972 prohibits discrimination on the basis of race, color and national origin in any program or activity receiving Federal financial assistance. Section 504 of the Rehabilitation Act of 1973 prohibits discrimination on the basis of handicap in any program or activity receiving Federal financial assistance. These Federal laws require the Board of ESU 8 as the recipient of Federal funds to designate an employee to coordinate efforts to comply with these regulations. The laws also require publicizing the name, office address and phone number of the Coordinator. ESU 8 has designated its Administrator as the Coordinator for Title IX and Section 504.

### **B. *Drug-Free Workplace Policy***

Educational Service Unit 8 is committed to providing an employment environment that is safe and provides appropriate motivation to ensure a creative and productive work force. ESU 8 unequivocally endorses the philosophy that the workplace should be free from the detrimental effects of illicit drugs and alcohol. All ESU 8 employees will be provided with a copy of ESU 8's Board Policy pertaining to a drug-free workplace and will be required to acknowledge receipt of that copy.

### **C. *Smoking Policy***

ESU 8 operates smoke-free facilities.

## **V. EQUIPMENT and FACILITIES**

### **A. *Use of Equipment, Materials and Supplies***

As a general rule, ESU 8 equipment, materials and supplies are not to be used by employees for personal use. Requests by employees to use equipment or purchase materials or supplies must be approved in advance by the Department Coordinator and/or the Administrator.

### **B. *Use of Facilities***

Use of ESU 8's facilities are primarily for activities sponsored by ESU 8. Requests by others must have Administrative approval to use the facilities. Departments who request and are authorized to use the facilities outside of normal office hours will be responsible for being on site during the activity. Employees may not utilize ESU 8 facilities for personal functions.



## VI. MISCELLANEOUS

### **A. Purchases**

All purchases must be authorized through a purchase order and must be approved by the Department Coordinator and the Administrator.

### **B. Committees, Offices and Professional Presentations**

Before agreeing to serve, hold office in professional organizations, and/or make presentations at professional meetings, the employee shall first request permission to be absent from duty and shall follow the guidelines of professional growth, professional leave, and administrative leave.

### **C. Confidential Information**

All personnel are continually exposed to information about individual students and school systems that is confidential in nature. It is expected that employees will respect this confidentiality as a professional. Do not convey stories or rumors from one school to another or enter local school problems.

### **D. Relationship With Local Schools**

Employees will report to the Administrators the first day of school. Employees will submit a work schedule and written reports of projects completed or instruction that has taken place. Employees will always represent ESU 8 in a professional and positive manner. Employees who work in a local school will follow all local school policies. The Administration of the local school is the supervisor when the employee is there. If there are problems at a school, they should be discussed with the employee's designated Department Coordinator. The local school will evaluate the employees' performance annually.

### **E. Contract Release**

A signed contract is an obligation of two parties. In some cases, if a suitable replacement can be found, the Board can accept a late resignation.